



# Good to Go Safety

Promoting best practice



Product **Brochure**

**Safe Equipment**  
Management System

# Good to Go Safety



**Good to Go Safety** provides a range of products designed to improve workplace safety and reduce the risk of accidents.

**Unparalleled knowledge and technical expertise. Market leading customer service and sales support.**

Our innovative '**Safe Equipment Management System**' (SEMS) helps to achieve a safer workplace environment, ensuring employees know when their equipment has been checked and proven to be '**Good to Go**'.

**Good to Go Safety - the ideal business partner in Safe Equipment Management**

## Contents

Introduction	3-4
How it Works	5-6
<b>Products</b>	
Components	7-8
Kit Options	9-10
Additional Products	11-12
<b>Applications</b>	
Forklifts	13-14
Ladders	15-16
Pallet Trucks	17-18
Pallet Racking	19-20
Scaffold Towers	21-22
Fixed Scaffolding	23-24
Fall Arrest Harnesses	25-26
Excavators	27-28
Mobile Platforms (MEWP)	29-30
Podium Steps	31-32
Tractors	33-34
Trailers	35-36
Fleet Vehicles	37-38
Forklift Basket Platform	39-40
Overhead Crane	41-42
Loader Crane	43-44
Tow Tractor	45-46
Bespoke Equipment	47-48
A2 Pre-use Inspections Posters	49-50
Why Good to Go?	51
Index	52

## Universal Status Tag



## THE BENEFITS OF PROACTIVE MAINTENANCE

A SAFE EQUIPMENT MANAGEMENT SYSTEM (SEMS) REMOVES THE DANGER OF ASSUMPTIONS

- REDUCES MAINTENANCE COSTS
- COMPLIES WITH LEGISLATION
- IMPROVES WORKPLACE SAFETY
- COMMUNICATES EQUIPMENT STATUS

FOR MORE INFORMATION VISIT [WWW.GOODTOGOSAFETY.CO.UK](http://WWW.GOODTOGOSAFETY.CO.UK)

T 01592 655646

# Introduction



**Good to Go Safety** is a Safe Equipment Management System (SEMS) which both promotes and manages safety checks on workplace equipment and is the ideal addition to your H&S, maintenance and equipment management programmes – ensuring that equipment and employees are always **Good to Go!**

**Good to Go Safety** is a flexible and adaptable system. Suitable for monitoring all your workplace equipment and supporting the need for regular equipment checks in line with PUWER (Provision and Use of Work Equipment Regulations) and maintenance / health & safety policies. Whether you require daily, weekly, monthly or ad-hoc checks to be carried out, **Good to Go Safety** provides the perfect solution. Available as individual components or in kit format. It's a truly flexible system with the versatility to meet all your equipment safety management needs.

**The Ultimate in Safe Equipment Management Systems**



# How it Works

- **Informs** employees of equipment status.
- **Quick** and easy to use.
- Improves employee **confidence** in equipment reliability.
- **Comply** with legislation and industry best practice.
- Tamper evident seal ensures **authentic** status tag display.
- Helps **prevent accidents**.
- Helps **educate** employees.
- Can be used to **quarantine** faulty equipment.
- Helps equipment **performance**.

Unfortunately serious accidents are a daily occurrence in the workplace. These accidents are often as a result of inadequate training or equipment misuse. A SEMS can prevent accidents and help avoid personal injuries.

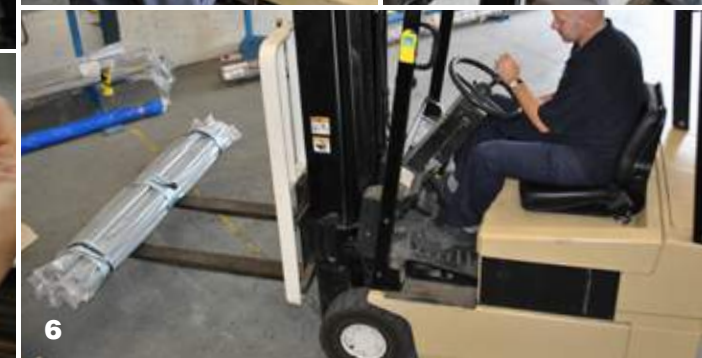
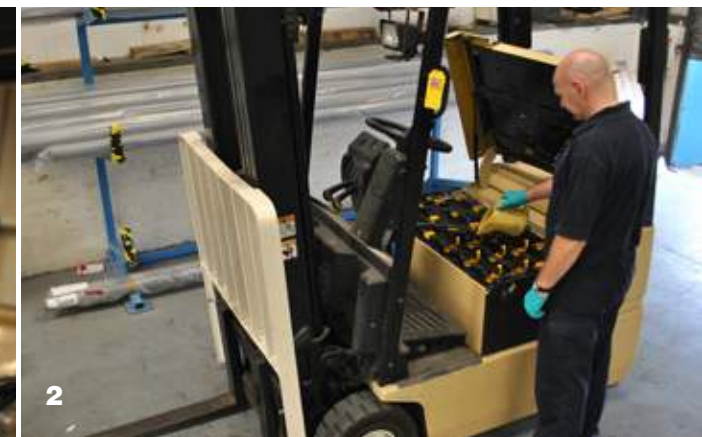
The **Good to Go Safety** system is an innovative and adaptable inspection system which provides a means for assessing equipment, highlighting any defects and ultimately providing a safer working environment.

**Good to Go Safety** offers a simple, effective and affordable solution to equipment safety. It is a flexible system, which is available to buy in both individual components or in kit format.

The **Good to Go Safety** kit has three parts. The tag, which attaches to the equipment and displays the current status. The check book, detailing the essential checks required to assess the equipment and a tamper evident seal to protect the integrity of the latest assessment.

The Good to Go Safety system can be used on a wide range of applications, including fixed scaffolding, forklifts, ladders, vehicles, MEWP's, pallet trucks and many more.

**Good to Go Safety - Delivering innovative solutions to enhance equipment safety.**



**1 Tag It** Attach the status tag to the appropriate equipment.

**3 Record It** Complete the inspection checklist and provide an assessment of the equipment.

**5 Secure It** Fit the tamper seal to deter unauthorised access and ensure an authentic display.

**2 Check It** Use the application specific check book to carry out a comprehensive inspection.

**4 Display It** Remove the top sheet, fold and insert the findings into the status tag.

**6 Good to Go** The tag will now display the findings and advise when the equipment is 'Good to Go' or if a fault is found a 'Do Not Use' message can be displayed.



# Components

## 1 Status Tag

The **Good to Go Safety** Status Tag is attached to equipment (usually at the point of entry) and used to advise employees when the equipment is 'Good to Go' following a pre-use inspection. If a fault is found then the tag can display a 'Do Not Use' message to quarantine the equipment until further notice.

- Manufactured from tough, durable, highly visible polypropylene
- Weather resistant and UV stable
- Channelled base allows flush fitting onto scaffold tubes
- Multiple fixing options include cable-ties, screws, adhesive or rivets
- Clear window displays "Do Not Use" message until a completed checklist is inserted
- Displays date of audit and result of the last checklist.

£6.95 ex vat

51301

## 3 Tamper Seal

Tamper Evident Seals are an optional extra which can provide a visual indicator that the checklist insert is in place and verified. If the seal is missing, employees should not use the equipment and a new checklist should be completed before a new seal is inserted to validate the inspection.

- Blue plastic seal offers maximum visibility
- FDA approved material allows use within the food industry
- Arrow head fits into status tag to seal and helps prevent the tag being re-opened
- The seal must be snapped forward to break the arrow head and allow the tag to be opened
- A useful addition when quarantining defective equipment
- Supplied in boxes of 100

£10.50 ex vat

51307

## 2 Check Book

Designed to promote and enable pre-use checks of workplace equipment to help you comply with PUWER obligations. Each **Good to Go Safety** Book includes comprehensive checklists to help you meet your legal obligations. Duplicate copies of each completed checklist are retained within the check book, providing invaluable evidence of your Safe Equipment Management System (SEMS) in the event of an accident.

- 25 individual checklists
- Each checklist incorporates a unique sequential number
- The completed checklist (signed and dated) is placed inside the tag, informing everyone when it is good to go
- An integral addition to your maintenance and H&S programmes
- Each check book includes useful guidance notes for inspection procedures
- Flexible to meet your needs, allows you to specify the frequency of your inspections
- The check book also retains carbon copies of all completed equipment checks for management records

Choose from a wide range of books to find the relevant checklist for your workplace equipment. The check books allow you to specify the frequency of your inspections, whether that be daily, weekly, monthly, start of shift or on an ad-hoc basis.

£5.20 ex vat



1 - ACTUAL SIZE



2



3



# Kit Options

**Accidents in the workplace are a frequent occurrence, often as a result of inadequate training or equipment misuse.**

Using a Good to Go Kit will provide employers with a safer working environment, enabling them to check equipment on a regular basis and quarantine if a fault is found. Regular equipment checks can dramatically reduce the risk of accidents.

No matter what type of equipment is used within a business, safety is, and should always be, the main priority. Businesses which only use equipment occasionally must still ensure it has been checked thoroughly and is in a safe working condition. **Good to Go Safety** offer a flexible solution to ensure all equipment within your business is in good working order.

Kits are supplied in a reusable box, allowing completed check books to be securely stored and filed providing an effective record of inspections for the required time period.

## 1 Daily Kit

The **Good to Go Safety** Daily Kit provides everything you need in order to carry out daily equipment checks for a full year. (Based on a 5-day working week).

### Includes:

- 2 x Status Tags
  - 11 x Check Books (275 Inspections)
  - 1 x Check Book Wallet and Pen
  - 300 x Tamper Evident Seals
- £87.50 ex vat

## 2 Weekly Kit

The **Good to Go Safety** Weekly Kit provides all you need to carry out 50 individual checks.

### Includes:

- 1 x Status Tag
  - 2 x Check Books (50 Inspections)
  - 1 x Check Book Wallet and Pen
  - 100 x Tamper Evident Seals
- £31.76 ex vat



1



2





# Additional Products

## 1 Dispenser

Suitable for storing check books in a central location for quick and easy access.

- Holds up to ten individual check books.
- Clear holder allows instant recognition of contents and quantities.
- Can be wall mounted (pre-drilled) or used as a free standing dispenser.
- External Dimensions (HxWxD): 165x117x76mm.

£6.99 ex vat

58099

## 3 Information Station

The Information Station provides details of the **Good to Go Safety** inspection process whilst offering easy access to check books from a central location. The information station can also be personalised to include company specific safety messages and corporate branding.

- Supplied with five clear sturdy dispensers
- Each dispenser holds up to 10 check books (not included)
- 10mm foam PVC board is easily drilled for wall mounting
- Board Dimensions (HxWxD): 750x700x10mm
- Dispenser Dimensions (HxWxD): 165x117x76mm
- Add your company logo

£195.50 ex vat

51335

## 2 Wallet & Pen

This useful **Good to Go Safety** Wallet will protect the check Book whilst providing a solid writing surface.

- Securely holds a check book and pen in place.
- Includes guidance notes on how to use the **Good to Go Safety** System.
- Wallet provides solid writing board and additional protection to the check book.

£4.73 ex vat

51308

## 4 Weather Resistant Holder

These industrial strength pockets are perfect for storing **Good to Go Safety** check books and equipment manuals, with a press seal fastening to keep those important inspection checklists / documents clean and dry. A self-adhesive strip offers a permanent fixing or cable ties can be used if preferred.

- Sufficient room to carry A4 sized paperwork
- Weather Proof with press seal fastening
- Self-adhesive Strip for permanent fixing

£5.35 ex vat

58109



1



4



2



3

# Forklifts



Employers have a duty of care to ensure all employees operating or working in the vicinity of forklifts are protected from harm.

Ensure your forklift operators are trained in how to identify equipment failure and they understand the importance of a pre-use visual inspection.

**Good to Go Safety** offers a simple yet effective solution for forklift safety with daily or weekly inspections to suit your needs. Completing pre-use checks as part of your forklift truck safety maintenance programme ensures everyone is aware of the forklifts' status at all times.

The checklist covers the inspection of the main trucks controls, including steering, horn, brakes and lighting and can be used to record any general maintenance requirements.

The Good to Go System provides compliance with PUWER, LOLER, HSE & FLTA regulations and is recognised as promoting industry best practice. The status tag is highly visible and we recommend positioning the tag at the entry point to the cab or by the ignition box to help provide an immediate reminder to the operator before starting up the vehicle.

**Is your workplace equipment safe to use?**  
**Check it out with Good to Go**



## Forklift Range

### 51302 Check Book

The Good to Go Safety Forklift Check Book provides a comprehensive list of inspection checks to ensure that forklifts are in good working order.  
£5.20 ex vat

### 51313 Daily Kit

This kit provides everything required for a year of daily forklift inspections based on a 5-day working week.  
£87.50 ex vat

### 51309 Weekly Kit

With the Good to Go Safety Weekly Forklift Kit you'll have everything you need for a full years worth of weekly forklift inspections.  
£31.76 ex vat

“ Every year there are over 2,000 reported forklift truck accidents in the UK. That's around 40 injuries a week! ”

# Ladders



**Ladders account for a third of all reported fall from height incidents in the workplace, many of which could be prevented with basic training and by completing a quick pre-use inspection.**

**Good to Go Safety** enables a tag to be attached to a ladder and used in conjunction with a ladder checklist to ensure essential pre-use inspections are carried out. This can help reduce the risk of any incident and a potential fall from height. This system eradicates the assumption that the ladder is safe to use and enforces an inspection procedure to be completed prior to use providing compliance with PUWER, INDG402, WAHR & HSE regulations and in line with industry best practice. The tag is designed to fit on most industrial ladders (BS 2037 Class 1, BS EN 131 or BS 1129 ladders or stepladders) and we recommend positioning it at eye level near the grip point on the stiles for maximum visibility.

Quick, easy to use checklists ensure that key safety checks are carried out prior to use. Once completed the checklist provides a statement of the ladders status - Clearly identifying when a ladder is '**Good to Go**' and importantly when it is not safe to use.

**The Safe Equipment Management System that is a step above the rest!**

## Ladder Range

### 51304 Check Book

The Good to Go Safety Ladder Check Book provides a comprehensive list of inspection checks to ensure that the ladders are in good working order.  
£5.20 ex vat

### 51315 Daily Kit

This kit provides everything required for a year of daily ladder inspections based on a 5-day working week.  
£87.50 ex vat

### 51311 Weekly Kit

With the Good to Go Safety Weekly Ladder Kit you'll have everything you need for a full years worth of weekly inspections.  
£31.76 ex vat



“ Every year in the UK an average of 14 deaths and 1200 major injuries occur as a result of falls from ladders ”

# Pallet Truck



Using materials handling equipment (MHE) has become significantly safer over the past decade, however on average one worker is still hospitalised every day in the UK due to an accident involving materials handling equipment. Injury is much more likely to occur to operators of damaged or ineffective MHE as handling of heavy or large objects carries high risk. Personnel utilising MHE such as pallet trucks, stackers and high lifters should ensure that correct procedures are being followed and most importantly, that the equipment is safe to use.

**In areas of frequent use or in harsh environments we would recommend that daily inspections are completed.**

Hand pallet trucks may not fall under LOLER (Lifting Operations and Lifting Equipment Regulations 1998) but are covered by PUWER (Provision and Use of Work Equipment Regulations 1998) and as such must be maintained in a good condition and routinely inspected to ensure they are fit for purpose.

**The easy way to inspect and maintain workplace equipment!**



## Pallet Truck Range

### 51336 Check Book

The Good to Go Safety Pallet Truck Check Book provides a comprehensive list of inspection checks to ensure that the pallet trucks are in good working order. £5.20 ex vat

### 51338 Daily Kit

This kit provides everything required for a year of daily pallet truck inspections based on a 5-day working week. £87.50 ex vat

### 51337 Weekly Kit

With the Good to Go Safety Weekly Pallet Truck Kit you'll have everything you need for a full years worth of weekly pallet truck inspections. £31.76 ex vat

“ On average one person is hospitalised every day in the UK due to accidents involving material handling ”

# Racking



“ Avoid the devastating impact of a racking collapse - please don't assume your warehouse is safe - check and ensure it's Good to Go ”

As all warehouse managers are aware racking damage from forklift truck collisions is a common occurrence, while unfortunately the reporting of incidents is generally low. The need for frequent racking checks is therefore critical to not only ensure structural damage is quickly addressed but additionally to monitor rack weight limits and safe load positioning. As we all know from HSE bulletins failure to complete these checks can have devastating consequences.

**Good to Go Safety** ensures a routine maintenance check of all racking bays, clearly identifying if the racking is good to go. We recommend a tag is located on the end of each racking bay alongside the safe working load sign for maximum visibility. The checklist covers the racking structure, loads held on each rack and general housekeeping of the racking area. It includes a classification system for any damaged racking and recommended actions in accordance with SEMA guidelines (using a colour coordinated level of risk).

**The status tag is instantly visible at the end of the racking ensuring operatives are aware when an inspection is required.**

The benefits of carrying out regular inspections not only comply with HSE legislation but also help lower maintenance costs, and above all, helps provide a safer working environment.

**Good to Go - Delivering best practice solutions.**



## Racking Range

### 51305 Check Book

The Good to Go Safety Racking Check Book provides a comprehensive list of inspection checks to ensure that racking is in good working order. £5.20 ex vat

### 51316 Daily Kit

This kit provides everything required for a year of daily racking inspections based on a 5-day working week. £87.50 ex vat

### 51312 Weekly Kit

With the Good to Go Safety Weekly Racking Kit you'll have everything you need for a full years worth of weekly racking inspections. £31.76 ex vat



# Scaffold Tower

**Good to Go Safety** provides essential safety checks for operatives prior to using a scaffold tower, improving worker safety and avoiding costly accidents. The result of an inspection is recorded and displayed in the status tag attached to the tower until the next planned inspection is carried out.

The scaffold status tag should be attached to the tube at the tower's point of entry to ensure maximum visibility. The tag is designed to sit flush on a scaffold tube to reduce the risk of snagging. Scaffold towers should meet the specification of BS EN 1004:2004 and the checks found in the **Good to Go Safety** Check Books can help to identify any non-conforming or poorly maintained towers.

**The Good to Go Safety Status Tag is instantly visible at the point of entry to the scaffold tower, reminding operatives of the need to complete the necessary checks prior to use.**

All BS EN 1004:2004 towers should be supplied with detailed user instructions and critical safety information specifying the use of either the 3T or Advance Guard Rail systems. The **Good to Go Safety** checklist recommends pre-use checks to help maximise user safety at all times.

**Workplace equipment is fit for use when checked with Good to Go Safety.**



## Tower Range

### 51303 Check Book

The Good to Go Safety Tower Check Book provides a comprehensive list of inspection checks to ensure that the towers are in good working order. £5.20 ex vat

### 51314 Daily Kit

This kit provides everything required for a year of daily tower inspections based on a 5-day working week. £87.50 ex vat

### 51310 Weekly Kit

With the Good to Go Safety Weekly Tower Kit you'll have everything you need for a full years worth of weekly inspections. £31.76 ex vat

“ Falls from heights are the biggest cause of death in the workplace. On average 45 deaths occur every year ”

# Fixed Scaffolding

**Good To Go Safety** helps employers meet their legal duties through the use of an innovative scaffold tag and pre-use checklist system. The scaffold status can be instantly updated following any structural alterations, periods of bad weather, as part of its 7 day or daily inspection programme. The system ensures compliance with PUWER, WAHR, CDM, NASC & HSE legislation and best practice.

**Regular maintenance and scaffold inspections are vital to ensure that equipment remains safe and stable, especially after any adverse weather conditions.**

Using a scaffold checklist has never been easier and can reduce the risk of a costly scaffold collapse or accident. Simply attach a tag to the scaffold tube at point of entry to ensure maximum visibility; the tag has been designed to sit flush to the scaffold tube using cable ties to reduce the risk of snagging. Complete the scaffolding checklist and you're good to go. The checklist has been designed in line with BS EN 12811-1 and TG20:13 guidance and provides a chronological duplicate record of all inspections for your maintenance records (as required under WAHR and PUWER).

**Unless the necessary measures are in place and adhered to, any issue relating to the use or abuse of the scaffold will expose the employers utilising the scaffold to risk; either commercially (through financial claims or lost work), or through the courts.**

“ There is an average of 1,000 serious injuries and 10 fatalities every year in the UK as a result of accidents involving scaffolding ”



## Scaffolding Range

### 51319 Check Book

The Good to Go Safety Scaffolding Check Book provides a comprehensive list of inspection checks to ensure that scaffolding is in good working order. £5.20 ex vat

### 51321 Daily Kit

This kit provides everything required for a year of daily scaffolding inspections based on a 5-day working week. £87.50 ex vat

### 51320 Weekly Kit

With the Good to Go Safety Weekly Scaffolding Kit you'll have everything you need for a full years worth of weekly inspections. £31.76 ex vat



# Harness



The Work at Height Regulations 2005 (WAHR) places responsibilities on managing or carrying out work at height. In addition to the legal requirements for inspections in WAHR, BS EN 365:2004 and BS 8437 also stipulate a requirement for periodic inspection of fall protection equipment. There is a wide range of potential damage to a harness - ranging from general wear and tear (abrasion, dirt etc) to impact force from falls. A harness can be life saving in the event of a fall so the need to carry out regular equipment checks is essential.

## There are varying levels of harness inspections:

**Pre-use checks:** Carried out every time before the harness is used - it should be a visual and tactile examination of the harness, carried out in good light. The entire harness should be checked and this should normally only take a few minutes to complete.

**Detailed inspections:** A formal and comprehensive inspection before first use and at least every 6 months thereafter. If the harness is in regular use the frequency of inspections should be increased accordingly.

**Interim inspections:** Similar to detailed inspections but may be required more frequently in applications where there is a high risk of equipment deterioration (e.g. working with chemicals, paint, grit blasting etc).

**Delivering innovative solutions to enhance equipment safety.**

## Harness Range

### 51325 Check Book

The Good to Go Safety Harness Check Book provides a comprehensive list of inspection checks to ensure the harness is in good working order.  
**£5.20 ex vat**

### 51327 Daily Kit

This kit provides everything required for a year of Daily Harness inspections based on a 5-day working week.  
**£87.50 ex vat**

### 51326 Weekly Kit

With the Good to Go Safety Weekly Harness Kit you'll have everything you need for a full years worth of weekly harness inspections.  
**£31.76 ex vat**



“ Falls from height are the biggest cause of death in the workplace with 3,750 injuries every year in the UK ”

# Excavators



A programme of daily visual checks, regular inspections and servicing schedules should be established and drivers should be encouraged to report defects or problems. Reported problems should be investigated promptly and the excavator taken out of service if the item is safety critical. Daily checks ensure that problems are discovered quickly, before they become major issues. Preventative maintenance of excavators will help prevent break downs and avoid costly employee and plant downtime. A Good to Go Safety checklist enables daily checks to be completed and recorded before displaying the findings in the status tag for all to see. This essential checklist can be used in conjunction with the excavator manufacturer's manual. Helps compliance with PUWER, LOLER, CDM, & HSE legislation and promotes best practice.

## Most fatal and serious injuries involving excavators occur when the excavator is:

- **Moving** – and strikes a pedestrian, particularly while reversing;
- **Slewing** – trapping a person between the excavator and a fixed structure or vehicle; or
- **Working** – when the moving bucket or other attachment strikes a pedestrian or when the bucket inadvertently falls from the excavator.

**Construction vehicles work in harsh environments and require effective maintenance regimes to avoid them developing defects.**

**“ An average of 5,000 serious injuries and 40 fatalities occur every year on UK construction sites. ”**

## Excavator Range

### 51342 Check Book

The Good to Go Safety Excavator Check Book provides a comprehensive list of inspection checks to ensure the Excavator is in good working order.  
£5.20 ex vat

### 51344 Daily Kit

This kit provides everything required for a year of daily Excavator inspections based on a 5-day working week.  
£87.50 ex vat

### 51343 Weekly Kit

With the Good to Go Safety Weekly Excavator Kit you'll have everything you need for a full years worth of weekly Excavator inspections.  
£31.76 ex vat



# Mobile Platforms



When using a MEWP (**Mobile Elevating Work Platform**) operators should carry out daily pre-use checks and regular detailed inspections to maximise safety. The checklists supplied by **Good To Go Safety** are designed to compliment the manufacturers instructions and inspection recommendations. If a safety problem is identified, the status display should be immediately updated to DO NOT USE and the MEWP taken out of service whilst advice is sought on rectifying the problem.

**The Good To Go Safety system can be used for varying types of MEWP, including cherry pickers, telescopic booms and scissor lifts.**

Using the MEWP **Good to Go Safety** system will help compliance with PUWER, LOLER, WAHR, CDM, IPAF & HSE legislation and best practice. The highly visible Good to Go Status tag should be positioned by the point of entry to remind operatives to carry out the MEWP pre-use checks and to advise the findings.

**Good to Go promoting safety, reducing risks.**

## MEWP Range

### 51322 Check Book

The Good to Go Safety MEWP Check Book provides a comprehensive list of inspection checks to ensure that the MEWPs are in good working order.  
**£5.20 ex vat**

### 51324 Daily Kit

This kit provides everything required for a year of daily MEWP inspections based on a 5-day working week.  
**£87.50 ex vat**

### 51323 Weekly Kit

With the Good to Go Safety Weekly MEWP Kit you'll have everything you need for a full years worth of weekly MEWP inspections.  
**£31.76 ex vat**



**“ HSE stipulate MEWPs must be thoroughly examined at least every 6 months by a competent person. ”**

Each book provides 25 individual checklists which are used to carry out a pre-use inspection with the findings placed inside the tag for all to see (a duplicate NCR copy is retained in the book for management records).

With the Good to Go Safety Weekly Podium Kit you'll have everything you need for a full years worth of weekly podium inspections.

**£31.76 ex vat**

32

# Tractor



The most common causes of serious and fatal injuries in agriculture involve farm vehicles and machinery. To comply with legislation, you should carry out daily checks to make sure the machinery you are about to use, or allow someone else to use, is safe and working correctly.

Keeping a record of when checks have been carried out and what work has been done is also important. These records will highlight that a machine is well maintained and regularly checked, proving invaluable in the event of an HSE inspection following an accident. The checks may also help reduce the risk of an accident occurring in the first place, as possible defects may be highlighted and repairs carried out before they deteriorate further. Regular maintenance can also extend the lifespan of the machine and help prevent deterioration of parts which could lead to expensive repair bills.

Ensures compliance with HSWA, PUWER, Road Traffic Act, LOLER, & HSE regulations and promotes best practice. A tag should be attached either at the entry point to the cab, or by the ignition box to help provide an immediate reminder to the operator before starting up the vehicle. The check book provides 25 individual checklists which are used to carry out a pre-use inspection with the findings placed inside the tag for all to see (a duplicate NCR copy is retained in the book for management records).

**Tick all the boxes and ensure you are always Good to Go!**

**“Farming accounts for 20% of all workplace fatalities. This equates to an average of more than 30 deaths and over 1000 serious injuries every year.”**



## Tractor Range

### 51345 Check Book

The Good to Go Safety Tractor Check Book provides a comprehensive list of inspection checks to ensure that the tractor is in good working order. £5.20 ex vat

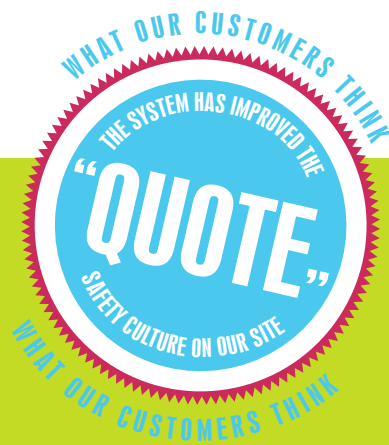
### 51347 Daily Kit

This kit provides everything required for a year of daily tractor inspections based on a 5-day working week. £87.50 ex vat

### 51346 Weekly Kit

With the Good to Go Safety Weekly Tractor Kit you'll have everything you need for a full years worth of weekly tractor inspections. £31.76 ex vat

# Trailer



The Transport Research Laboratory (2011) analysed accidents in the five year period 2005-2009. They identified a total of 4,173 reported accidents involving a car or light goods vehicle towing a trailer, with evidence suggesting that accidents involving a towed trailer were more likely to result in a serious or fatal road traffic accident.

**Good to Go Safety enables a tag to be attached to a trailer and serves as a reminder to carry out pre-use checks before taking to the road. The trailer checklist allows a run through of critical component checks including chassis, brakes, lighting and wheels as well as the load itself.**

We advise to attach the tag close to the hitch point for maximum visibility. A tamper evident seal will help ensure the checklist remains in place until the next inspection is due. A duplicate copy of each completed checklist provides documented evidence of a safe equipment management system (SEMS) and could prove indispensable in the event of an accident.

If used for work then a trailer will fall under the usual requirements of PUWER to provide safe equipment and the need to carry out routine checks. In addition The Road Vehicles (Construction and Use) Regulations 1986 specify the need for maintenance and use of vehicles so as not to be a danger to any person in or on the vehicle or trailer on a road.



## Trailer Range

### 51339 Check Book

The Good to Go Safety Trailer Check Book will enable your employees to run through a series of questions to ensure that towing trailers are in good working order.  
£5.20 ex vat

### 51341 Daily Kit

This kit provides everything required for a year of daily trailer inspections based on a 5-day working week.  
£87.50 ex vat

### 51340 Weekly Kit

With the Good to Go Safety Weekly Trailer Kit you'll have everything you need for a full years worth of weekly trailer inspections.  
£31.76 ex vat

# Vehicles



PUWER requires that work equipment is suitable and safe for its intended use, regularly inspected and maintained, and with employees properly trained in its use. This includes company vehicles (owned, leased or hired) as well as employee's own vehicles if used for work purposes.

**Good to Go Safety** provide a fleet vehicle safety checklist, designed to enable drivers to carry out essential pre-use checks of the vehicle prior to a journey. These regular checks can be built into a fleet management policy and will help to ensure the safety of the vehicle users whilst also reducing maintenance costs. The fleet vehicle checklist helps employers meet their legal duty of care, in accordance with laws governing occupational driving including The Health & Safety at Work Act 1974, PUWER & The Road Traffic Act 1998.

**Failure to carry out duty of care could lead to prosecutions against employers under the Corporate Manslaughter Act 2008 if an employee is killed in a work-related road-traffic accident.**

The introduction of a systematic maintenance and inspection programme allows fleet managers to receive a signed and dated checklist as evidence of an active and up-to-date maintenance programme. The checklist covers the main areas of the vehicle, including oils, coolant, screen wash and externally lights, mirrors, wipers and tyres.

**Good to Go - the driving force for improving workplace safety.**

“Driving is one of the most hazardous working activities in the UK, with an average of 220 injuries & 20 deaths each week”



## Vehicle Range

### 51306 Check Book

The Good to Go Safety Vehicle Check Book provides a comprehensive list of inspection checks to ensure that the vehicle is in good working order.  
£5.20 ex vat

### 51329 Daily Kit

This kit provides everything required for a year of daily vehicle inspections based on a 5-day working week.  
£87.50 ex vat

### 51328 Weekly Kit

With the Good to Go Safety Weekly Vehicle Kit you'll have everything you need for a full years worth of weekly vehicle inspections.  
£31.76 ex vat

# Forklift Basket



Forklift trucks are primarily intended for lifting materials rather than people, however a non-integrated working platform (aka man basket, forklift cage or forklift platform) can be used when it provides a safer means of access than, for example, improvised stairs or a ladder and where it is impracticable to use an integrated working platform.

The forklift safety cage falls under the requirements of The Provision and Use of Work Equipment Regulations 1998 (PUWER) and The Lifting Operations and Lifting Equipment Regulations 1998 (LOLER) and as such the platform must be used and maintained in good working order in accordance with the maintenance instructions provided by the working platform manufacturer.

**LOLER (regulation 8) requires that lifting operations are properly planned and that work is carried out in a safe manner.**

Regulation 7(2)(b) of the Work at Height Regulations 2005 places a duty on employers to select the most suitable work equipment for the task to be carried out, regardless of the duration of the task. Nevertheless, it is foreseeable (but unacceptable) that people will often use unsafe methods of access to work at height for short duration and occasional tasks. For example, a substantial number of serious accidents occur when people are lifted on the forks or buckets, pallets or stillages placed on the forks of forklift trucks. To encourage safer working practices, in these exceptional circumstances, occasional use of non-integrated working platforms with forklift trucks is allowed in the UK.

**“ Falls from height when using workplace transport results in approximately 700 major injuries each year in the UK. ”**



## Forklift Basket Range

### 51348 Check Book

The Good to Go Safety Forklift Basket Check Book provides a comprehensive list of inspection checks to ensure that the vehicle is in good working order.  
£5.20 ex vat

### 51350 Daily Kit

This kit provides everything required for a year of daily Forklift Basket inspections based on a 5-day working week.  
£87.50 ex vat

### 51349 Weekly Kit

With the Good to Go Safety Weekly Forklift Basket Kit you'll have everything you need for a full years worth of weekly forklift basket inspections.  
£31.76 ex vat

# Overhead Cranes

Crane accidents are thankfully fairly rare; however, when an accident does occur it can result in fatal or very serious injuries. Overhead lifting is a common workplace activity but the potential risks are often overlooked. Accident reports highlight the deaths and serious injuries that can occur when things go wrong but there can also be major economic costs and serious disruption to manufacturing output.

**It is estimated that 70% of all overhead crane incidents could have been avoided by providing proper training, and that a further 9% could have been avoided with better maintenance programmes.**

Ensuring that lifting equipment is fit for purpose is a vital element of any programme aiming to achieve high standards of health and safety; LOLER specifies the need to carry out a thorough examination of overhead cranes at least once every twelve months, which does help towards achieving that goal. It is important however not to rely solely on this one snapshot in time; it is recommended that companies also complete regular visual checks throughout the intervening period.

The **Good to Go Safety** system is flexible, allowing pre-shift start, daily, weekly, monthly or annual checks to be implemented – every site is likely to have differing requirements and the Good to Go system can be adopted to suit those needs.

**“ In recent years the number of deaths caused by cranes in the UK has averaged one per year ”**

## Overhead Crane Range

### 51351 Check Book

The Good to Go Safety Overhead Crane Check Book provides a comprehensive list of inspection checks to ensure that the Overhead Crane is in good working order.  
**£5.20 ex vat**

### 51353 Daily Kit

This kit provides everything required for a year of daily Overhead Crane inspections based on a 5-day working week.  
**£87.50 ex vat**

### 51352 Weekly Kit

With the Good to Go Safety Weekly Overhead Crane you'll have everything you need for a full years worth of weekly overhead crane inspections.  
**£31.76 ex vat**



# Loader Cranes

It is a legal requirement that loader cranes (often referred to as a lorry loader, vehicle mounted crane, knuckle boom crane or by the manufacturer name "hiab"), receive an up-to-date inspection in order to ensure it is safe to use and complies with current regulations (LOLER, PUWER, HSWA, MHSWR, and RTA). Because lorry loaders spend a significant amount of their working time travelling on the public highway, the Vehicle & Operator Services Agency (VOSA) has the authority to issue on the spot fines for any obvious non-compliance.

**Pre-operational checks are an integral part of any effective maintenance regime.**

As with all lifting equipment the loader crane is subject to wear and deterioration over time. Routine checks and inspections can help to identify faults before they develop further, improving safety and reducing costs in the long run.

The pre-use check should be carried out at the start of the working day or shift or when taking over the lorry loader for the first time (e.g. mid-shift). It is important that the personnel asked to carry out these inspections have the necessary training, experience and competence to do so safely and accurately.



## Loader Crane Range

### 51351 Check Book

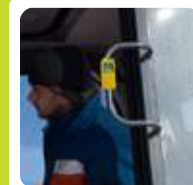
The Good to Go Safety Loader Crane Check Book provides a comprehensive list of inspection checks to ensure that Loader Cranes are in good working order.  
£5.20 ex vat

### 51353 Daily Kit

This kit provides everything required for a year of daily Loader Crane inspections based on a 5-day working week.  
£87.50 ex vat

### 51352 Weekly Kit

With the Good to Go Safety Weekly Loader Crane you'll have everything you need for a full years worth of weekly loader crane inspections.  
£31.76 ex vat



# Tow Tractor



The efficiency of transport processes with tow tractors and tow tugs is proven in difficult areas. Narrow aisles, small loading areas, steep ramps or uneven surfaces can make smooth operation difficult with alternative methods (such as forklifts or pallet trucks), whilst the ability to tow multiple trailers can significantly reduce traffic and improve material flow in busy environments. With more companies using tow tractors and trailers to provide greater throughput, leaner production processes and minimising journey times/distances the need to ensure they remain in good working order is more critical than ever.

**Tow tractors require inspection under the Provision and Use of Work Equipment Regulations 1998 (PUWER) and our checklist system can help companies to meet those responsibilities.**

Industrial trucks account for a large proportion of accidents in warehouses. Many of these accidents are due to operator error associated with inadequate or lack of training. There are however, other reasons for truck accidents, including unsuitable premises, poor layout and design of truck operating areas and poor truck maintenance. Employers using trucks should therefore adopt safe systems of work (eg for training employees, procedures for traffic and pedestrian movement, and for control and maintenance of trucks).

“ A fully laden tow tractor and trailer can pull some serious tonnage so pre-use equipment checks of brakes, tyres and loads (amongst others) will help keep staff safe in the workplace ”



## Tow Tractor Range

### 51357 Check Book

The Good to Go Safety Tow Tractor Check Book provides a comprehensive list of inspection checks to ensure that the vehicle is in good working order.  
£5.20 ex vat

### 51358 Daily Kit

This kit provides everything required for a year of daily Tow Tractor inspections based on a 5-day working week.  
£87.50 ex vat

### 51359 Weekly Kit

With the Good to Go Safety Weekly Tow Tractor Kit you'll have everything you need for a full years worth of weekly Tow Tractor inspections.  
£31.76 ex vat

# Bespoke



Despite our best efforts it is impossible to provide an accurate checklist for every type of equipment and for that reason we can offer you the chance to create your own equipment checklist for any equipment not included within our standard range of check books.

**PUWER stipulates that equipment provided for use at work is:**

- Suitable and safe for use.
- Maintained in a safe condition and inspected to ensure this remains the case.
- Used by people who have received adequate information, instruction and training.

**As a result, employers must ensure that:**

- Measures are in place to minimise risks.
- Only fully trained personnel are allowed to use equipment where there is a specific risk.
- Work equipment provided is suitable, maintained and used without risks.

Our Bespoke check book allows you to compile your own checklist for any piece of equipment. You identify the checks you need your operatives to carry out on their equipment and simply compile your checklist in the space provided on the inside cover of the book. This list can then be cross referenced against the numbers on the checklists to carry out a pre-use inspection in much the same way as our standard products.

**Good to Go Safety** delivers on all levels. Simply attach a status tag to the relevant equipment and use your bespoke checklist to carry out a pre-use inspection.

## Bespoke Range

### 51317 Check Book

Create your own equipment checklist to suit your specific workplace requirements.  
£5.20 ex vat

### 51334 Daily Kit

This kit provides everything required for a year of daily bespoke inspections based on a 5-day working week.  
£87.50 ex vat

### 51333 Weekly Kit

With the Good to Go Safety Weekly Bespoke Kit you'll have everything you need for a full year worth of weekly inspections.  
£31.76 ex vat



“ The Provision & Use of Work Equipment Regulations 1998 (PUWER) covers all equipment used by an employee at work ”

# Pre-use Inspection Posters

Our range of A2 posters have been designed to reinforce the importance of completing daily pre-use inspections and are perfect accessories to our Good to Go Safety inspection systems.

**These posters provide a strong visual reminder to employees, showing what they should be looking for during a pre-use inspection and highlighting components included in the actual checklists.**

Produced on tough, durable, wipe-clean synthetic paper they are suitable for both internal and external use, making them perfect for displaying in even the harshest of environments.

Easily positioned using pins, tape, adhesive or poster frames. Rolls up for easy storage but won't tear or delaminate. A perfect addition to your equipment management system.



**Forklift**  
Code: 51360  
£18.63 ex vat



**Ladder**  
Code: 51361  
£18.63 ex vat



**Racking**  
Code: 51362  
£18.63 ex vat



**Scaffold Tower**  
Code: 51363  
£18.63 ex vat



**Pallet Truck**  
Code: 51364  
£18.63 ex vat



**Trailers**  
Code: 51365  
£18.63 ex vat



**MEWP**  
Code: 51366  
£18.63 ex vat



**Loader Crane**  
Code: 51367  
£18.63 ex vat



**Harness**  
Code: 51368  
£18.63 ex vat



**Excavator**  
Code: 51369  
£18.63 ex vat



# Accolades



**Commended for 'Safety Excellence'**  
BSIF Safety Awards 2018

**Winner of 'Best New Product'**  
Commercial Fleet Awards 2015

**Shortlisted for 'Contribution to Safe Working at Height'**  
IAPA 2015

**Shortlisted for two Design 4 Safety Awards**  
IMHX 2016

1. Ensures employees know when equipment is Good to Go.
2. Meet your obligations under PUWER and H&S legislation and reduce accidents.
3. Prevent equipment downtime.
4. Identify equipment faults before they develop into a costly accident.
5. Carbon copy of each completed checklist provides a permanent record of findings.
6. Sturdy and universal status tag designed to attach onto all types of equipment.
7. A tamper evident seal ensures an authentic display.



## Index



<b>Components</b>	<b>7-8</b>
Status Tag	<b>51301</b> £6.95
Tamper Seals	<b>51307</b> £10.50
Wallet & Pen	<b>51308</b> 4.73



<b>Accessories</b>	<b>11-12</b>
Dispenser	<b>58099</b> £6.99
Information Station	<b>51335</b> £195.50
Document Holder	<b>58109</b> £5.35



<b>Forklift</b>	<b>13-14</b>
Check Book	<b>51302</b> £5.20
Weekly Kit	<b>51309</b> £31.76
Daily Kit	<b>51313</b> £87.50



<b>Ladder</b>	<b>15-16</b>
Check Book	<b>51304</b> £5.20
Weekly Kit	<b>51311</b> £31.76
Daily Kit	<b>51315</b> £87.50



<b>Pallet</b>	<b>17-18</b>
Check Book	<b>51336</b> £5.20
Weekly Kit	<b>51337</b> £31.76
Daily Kit	<b>51338</b> £87.50



<b>Racking</b>	<b>19-20</b>
Check Book	<b>51305</b> £5.20
Weekly Kit	<b>51312</b> £31.76
Daily Kit	<b>51316</b> £87.50



<b>Tower</b>	<b>21-22</b>
Check Book	<b>51303</b> £5.20
Weekly Kit	<b>51310</b> £31.76
Daily Kit	<b>51314</b> £87.50



<b>Scaffolding</b>	<b>23-24</b>
Check Book	<b>51319</b> £5.20
Weekly Kit	<b>51320</b> £31.76
Daily Kit	<b>51321</b> £87.50



<b>Harness</b>	<b>25-26</b>
Check Book	<b>51325</b> £5.20
Weekly Kit	<b>51326</b> £31.76
Daily Kit	<b>51327</b> £87.50



<b>Excavator</b>	<b>27-28</b>
Check Book	<b>51342</b> £5.20
Weekly Kit	<b>51343</b> £31.76
Daily Kit	<b>51344</b> £87.50



<b>MEWP</b>	<b>29-30</b>
Check Book	<b>51322</b> £5.20
Weekly Kit	<b>51323</b> £31.76
Daily Kit	<b>51324</b> £87.50



<b>Podium Steps</b>	<b>31-32</b>
Check Book	<b>51330</b> £5.20
Weekly Kit	<b>51331</b> £31.76
Daily Kit	<b>51332</b> £87.50



<b>Tractors</b>	<b>33-34</b>
Check Book	<b>51345</b> £5.20
Weekly Kit	<b>51346</b> £31.76
Daily Kit	<b>51347</b> £87.50



<b>Trailers</b>	<b>35-36</b>
Check Book	<b>51339</b> £5.20
Weekly Kit	<b>51340</b> £31.76
Daily Kit	<b>51341</b> £87.50



<b>Vehicle</b>	<b>37-38</b>
Check Book	<b>51306</b> £5.20
Weekly Kit	<b>51328</b> £31.76
Daily Kit	<b>51329</b> £87.50



<b>Forklift Basket</b>	<b>39-40</b>
Check Book	<b>51348</b> £5.20
Weekly Kit	<b>51349</b> £31.76
Daily Kit	<b>51350</b> £87.50



<b>Overhead Crane</b>	<b>41-42</b>
Check Book	<b>51351</b> £5.20
Weekly Kit	<b>51352</b> £31.76
Daily Kit	<b>51353</b> £87.50



<b>Loader Crane</b>	<b>43-44</b>
Check Book	<b>51354</b> £5.20
Weekly Kit	<b>51355</b> £31.76
Daily Kit	<b>51356</b> £87.50



<b>Tow Tractor</b>	<b>45-46</b>
Check Book	<b>51357</b> £5.20
Weekly Kit	<b>51358</b> £31.76
Daily Kit	<b>51359</b> £87.50



<b>Bespoke</b>	<b>47-48</b>
Check Book	<b>51317</b> £5.20
Weekly Kit	<b>51333</b> £31.76
Daily Kit	<b>51334</b> £87.50



<b>A2 Posters</b>	<b>49-50</b>
Forklift	<b>51360</b> £18.63
Ladder	<b>51361</b> £18.63
Racking	<b>51362</b> £18.63
Scaffold Tower	<b>51363</b> £18.63
Pallet Truck	<b>51364</b> £18.63
Trailers	<b>51365</b> £18.63
MEWP	<b>51366</b> £18.63
Loader Crane	<b>51367</b> £18.63
Harness	<b>51368</b> £18.63
Excavator	<b>51369</b> £18.63

# Product Brochure



 [www.goodtogosafety.co.uk](http://www.goodtogosafety.co.uk)  
 [enquiries@goodtogosafety.co.uk](mailto:enquiries@goodtogosafety.co.uk)  
 **01592 655646**  **01592 655330**

 **Waverley Road, Mitchelston Industrial Estate  
Kirkcaldy, Fife, United Kingdom, KY1 3NH**