

# INFOGRAPHIC

BASED ON THE DEPARTMENT FOR TRANSPORT DATA ANALYSIS 2015

The Department for Transport (DfT) has released the latest data analysis for road accidents and safety statistics in the UK for 2015. There is a great deal of information available, allowing you to drill down into the whys and the wherefores of these accidents and to identify trends and patterns when comparing to previous years. Perhaps the best starting point for an overview of all the data is available at:

<https://www.gov.uk/government/statistics/reported-road-casualties-great-britain-annual-report-2015>

This report gives a detailed summary of personal injury accident statistics on public roads in Great Britain for 2015 and contributory factors.

## TOTAL OF 186,189 INJURIES ON UNITED KINGDOM ROADS IN 2015

59%

Based on the stats shown in this years report we can see that roughly 59% of all casualties were men.

109,003

77,186

41%

Based on the stats shown in this years report we can see that roughly 41% of all casualties were women.

### TYPE OF INJURY

87%

#### MINOR

Slightly injured during a road traffic incident. Causing the person slight harm, but no significant long term damage. E.g. Grazes, Bruises, Sprains,



12%

#### SERIOUS

Critically injured during an incident on the road. Causing persons serious harm with long term effects, such as Broken Bones, Whip Lash, Internal Bleeding.



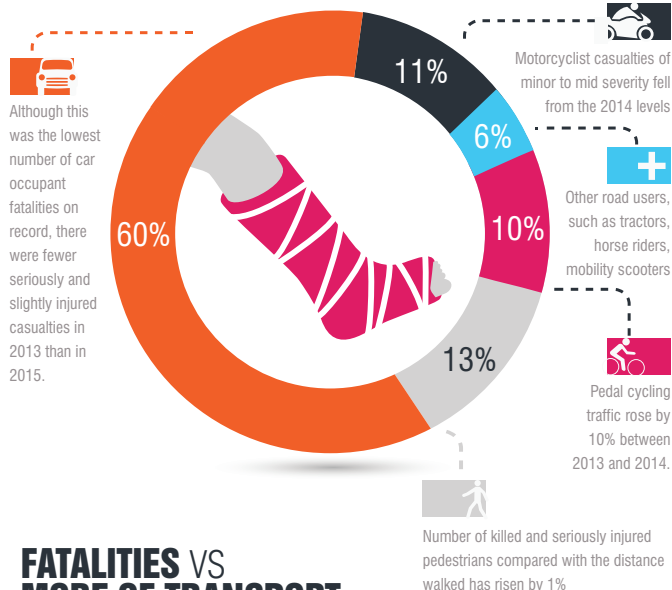
1%

#### FATALITY

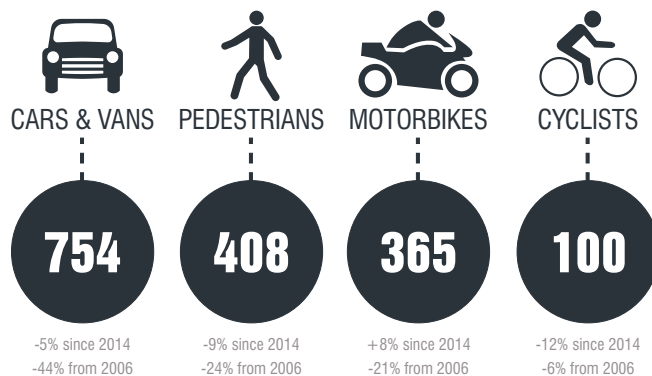
Accident which results in a fatality of any person.



## INJURIES VS MODE OF TRANSPORT



## FATALITIES VS MODE OF TRANSPORT



## TOTAL OF 1627 FATALITIES



It now appears that fatality numbers are fluctuating around the 1,700 to 1,800 mark and only one of the last five years has had a statistically significant change.

## TOTAL OF 111,707 CAR OCCUPANT CASUALTIES IN THE UK - 2015



32% WERE PASSENGERS 14% WERE AGED 17-24

## INJURIES VS FAULTY VEHICLES DATA FOCUSING ON CONTRIBUTORY FACTORS

We see that 2% of all fatalities (that's 35 deaths) and accidents (1,830) can be attributed to vehicle defects; the vast majority of which would be easily spotted during a pre-drive walk-around inspection. Checking tyres, lights, mirrors etc are simple inspections that would quickly identify issues with little technical knowledge required. When you see the numbers and consider the impact on the families of those involved it is hard to ignore the importance of routine maintenance and servicing for vehicles.

